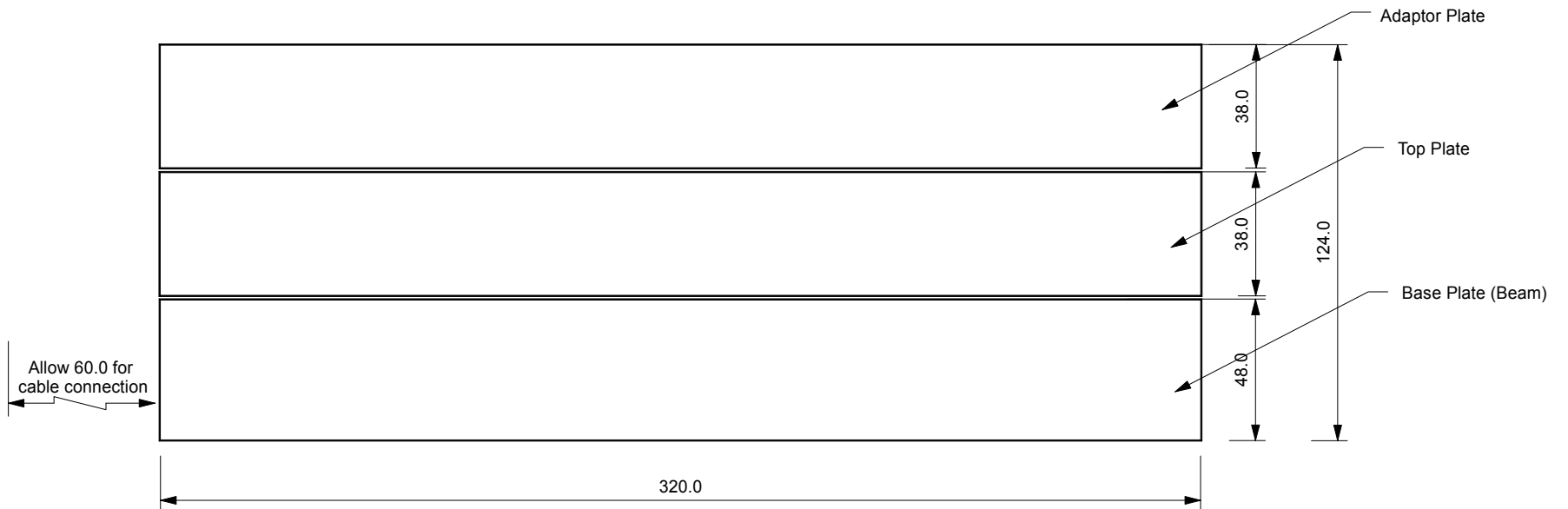
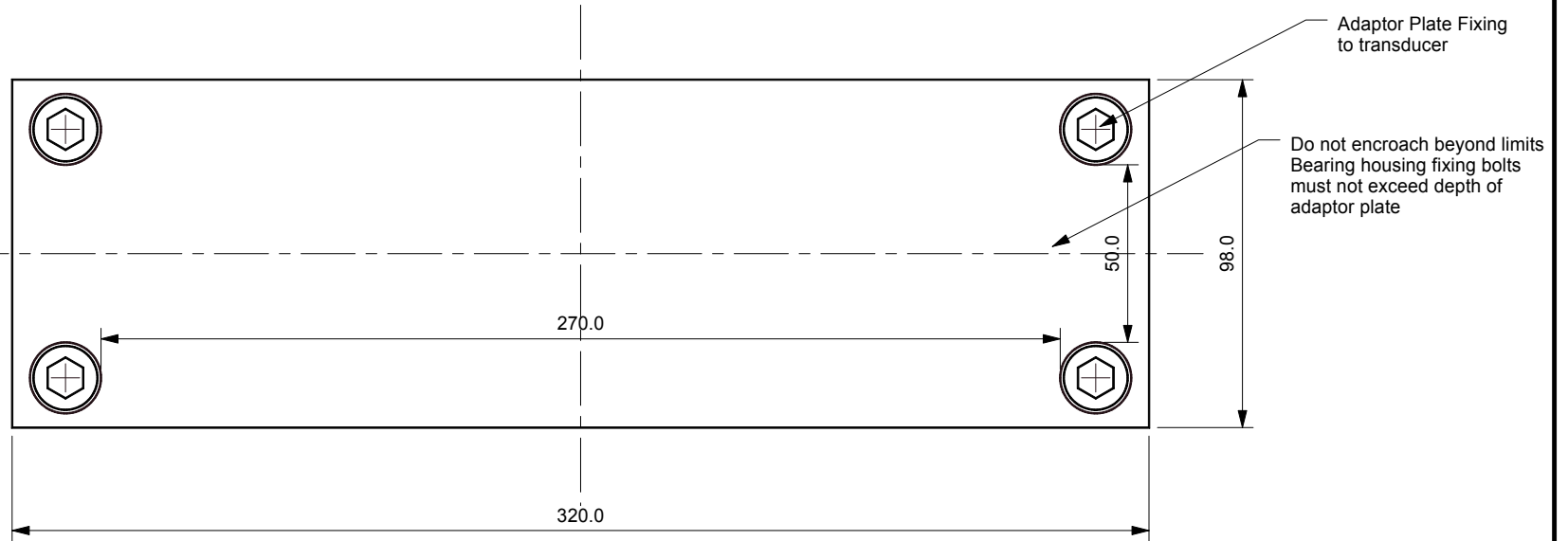


View with optional adaptor plate fitted to show available area for mounting of plummer block

Notes

1. Refer to Drawing No. 232-11-xx for transducer beam fixing centres.
2. Adaptor plate is supplied but optional Bearing housing fixing bolts must not be longer than plate depth
3. When fixing all plates together ensure plates are aligned and the plates are not causing distortion



Issue 1	20/12/03	Initial Layout	TTS Systems 14 Highpoint Business Village Henwood Ashford Kent TN24 8DH Telephone 44 (0) 233 624422 Telefax 44 (0) 1233 624466 E-Mail info@tts-systems.co.uk	TITLE FLATBED TRANSDUCER SIZE 2 GENERAL ARRANGEMENT WITHOUT SPLASH GUARD	Drawn By	Date	Approved	Date	Scale	Projection	Third Angle
Issue 2	08/02/04	Length increased			CJ	20/12/03	XXX	XX/XX/XX	N.T.S	Tolerance	+/-0.1 unless otherwise stated
Issue 3	XX/XX/XX	XXXXXXXXXXXXXXXXXXXXXX			DRAWING NUMBER		232-14-1		Material	N/A	
Issue 4	XX/XX/XX	XXXXXXXXXXXXXXXXXXXXXX			CUSTOMER REFERENCE				Finish	N/A	
Issue 5	XX/XX/XX	XXXXXXXXXXXXXXXXXXXXXX							Notes	No burrs, blemishes or sharp edges	
Issue 6	XX/XX/XX	XXXXXXXXXXXXXXXXXXXXXX									
Issue 7	XX/XX/XX	XXXXXXXXXXXXXXXXXXXXXX									
Issue 8	XX/XX/XX	XXXXXXXXXXXXXXXXXXXXXX									